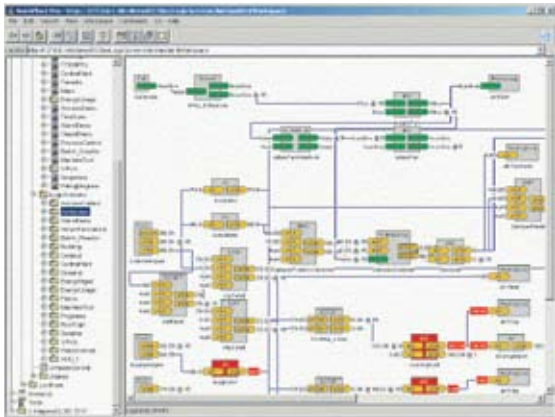


WorkPlace Pro



WorkPlace Pro

The TAC I/A Series WorkPlace Pro™ is a comprehensive set of engineering tools combined into one common, easy to use graphical-based engineering environment. WorkPlace Pro simplifies the complexity of working with multiple protocols by consolidating them into one common object model. Everything a user needs to manage and integrate diverse system protocols is available in one powerful engineering toolkit.

SPECIFICATIONS

SYSTEM REQUIREMENTS

Processor

Intel Pentium™ III, 350 MHz or higher (800 MHz or higher recommended).

Memory

96 MB RAM minimum (256 MB RAM or higher recommended).

Operating System

Microsoft™ Windows NT™ 4.0 with Service Pack 4 or higher, Windows™ 2000 with Service Pack 1, or Windows™ XP with Service Pack 1.

Browser

Microsoft Internet Explorer 5.0 or later, or Netscape™ Communicator 4.5 or later.

Hard Drive

2 GB minimum (4 GB or higher recommended).

Display

Video card and monitor capable of displaying 1024 x 768 pixel resolution.

Network Support

Ethernet adapter (10/100 megabit with RJ-45 connector).

Communications

Full time high speed ISP connection recommended for remote site access (such as T1, xDSL, cable modem).

AVAILABILITY

One copy of WorkPlace Pro is provided with each Enterprise Server. Additional copies may be ordered through Schneider Electric, using the WP-PRO-1 part number. Licensing is required.

FEATURES

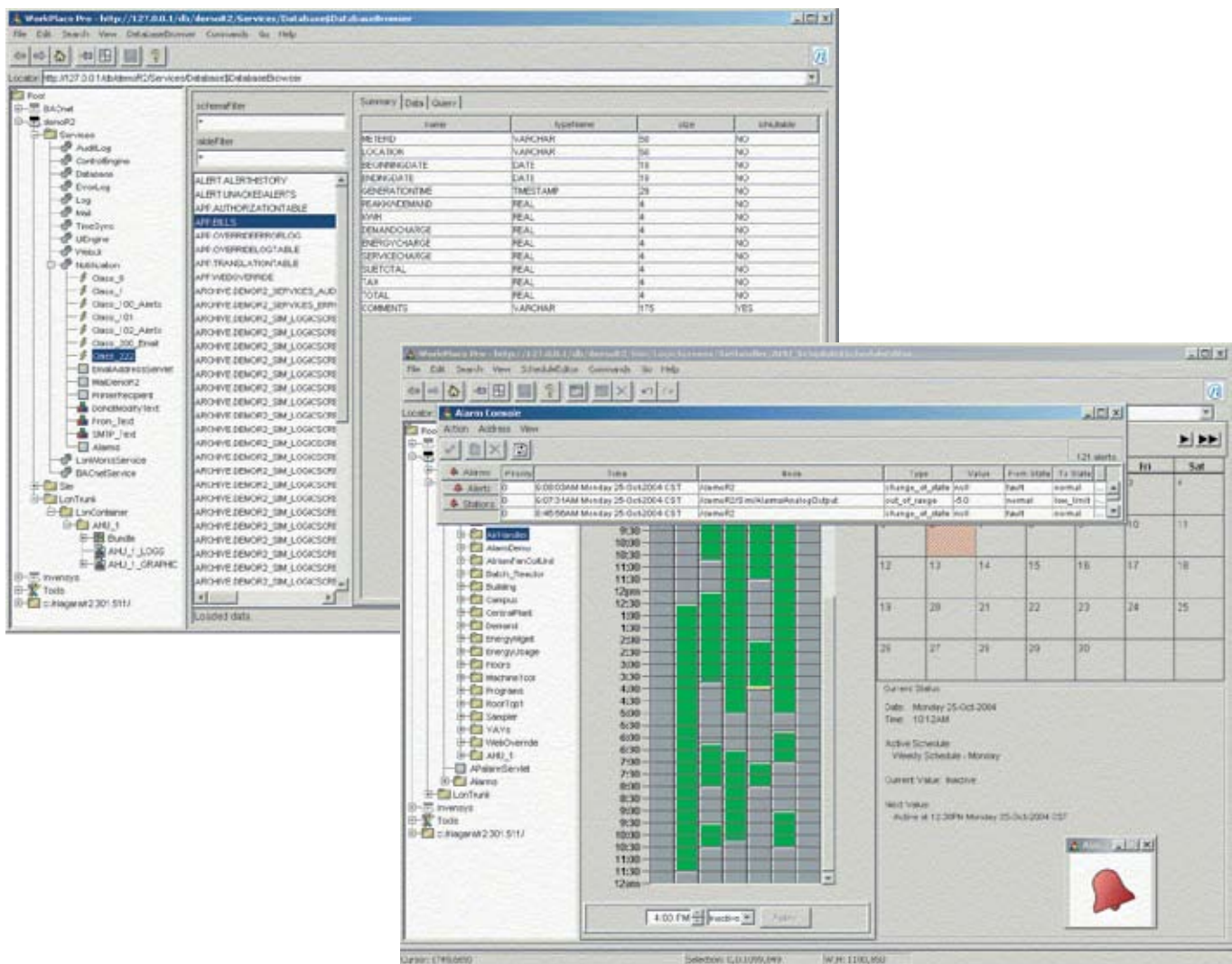
- Fast application development with a pre-assembled common object library.
- Comprehensive network management tool for LONWORKS™ based devices.
- Automatic “learn” feature and object generation for LONWORKS and BACnet™ based devices.
- Simple, common linking mechanism allows for transparent data sharing between devices of the same or differing protocols.
- Library of graphical images and standard HVAC backgrounds included for use in creating graphics.
- Extensive animation features for data and status displays in graphics.
- Sophisticated alarm processing with a separate “window” for alarm and alert monitoring and routing which includes e-mail and paging.
- Comprehensive administration tool included to manage UNC’s IP addresses, backup and restore databases, and setting the UNC real-time clock.
- Powerful Java™ Object model.
- Graphical engineering environment for easy application creation, using “graphical” Java objects plus the ability to configure and test control application logic and user interface graphics.
- Easy to use, powerful programming language for custom applications.
- Easy to use “tree” diagram for access of all database structure and elements.

Features continued on next page.

Features continued from first page.

- Provides a tool for administration of password protection and security using embedded security in each Java object.
- HTML-based help system that includes comprehensive on-line system documentation.
- Provides online or offline database creation.
- Workplace Pro is included as an integral feature of the TAC I/A Series Enterprise Server; additional copies may be purchased for multiple workstation environments.

USER INTERFACE



Distributed, manufactured, and sold by Schneider Electric. I/A Series trademarks are owned by Invensys Systems, Inc. and are used on this product under master license from Invensys. Invensys does not manufacture this product or provide any product warranty or support. For service, support, and warranty information, contact Schneider Electric.

All brand names, trademarks and registered trademarks are the property of their respective owners. Information contained within this document is subject to change without notice.

Schneider Electric 1354 Clifford Avenue, P.O. Box 2940, Loves Park, IL 61132-2940, USA 1-888-444-1311 www.schneider-electric.com/buildings